

ST BASIL'S HOMES

DEVELOPMENT APPLICATION PACKAGE

Prepared for:

ST BASIL'S

Prepared by:
Taylor Brammer Landscape Architects Pty Ltd

Drawing List
DWG NO
L00
L01
L02
L03
L04

DRAWING TITLE
LANDSCAPE: COVER SHEET
LANDSCAPE: GROUND LEVEL MASTER PLAN
LANDSCAPE: GROUND LEVEL SECTION ELEVATIONS
LANDSCAPE: LEVEL 3 MASTERPLAN & SECTION ELEVATION
LANDSCAPE: TYPICAL CONSTRUCTION DETAILS

SCALE
NTS @ B1
1:200@B1
1:200@B1
1:200@B1
AS SHOWN @B1



THE SITE

KEY PLAN NTS

SPECIFICATION NOTES

1.0 SERVICES
Before landscape work is commenced, The Landscape Contractor is to establish the position of all servielines and ensure tree planting is to be carried out at least 3 metres away from these services. Service lids, vents and hydrants shall be left exposed and not covered by any landscape finishes (turfing, paving, garden beds etc.) Finish adjoining surfaces flush with pit lids.

Dial Before You Dig - It is the landscape contractor's full responsibility to complete a full services search and take all required measures to ensure protection of these services including pot-holing to confirm locations. The client in no way will be held responsible for any damage caused to services as a result of the contract works.

Excavation
Do not excavate by machine within 1m of existing underground services.

2.0 SOILS

Planting Mix Type A
Location: All mass planting and tree planting in natural ground
Type: Native Low 9" Mix
Supplier: Australian Native Landscape (tel: 131458)

Planting Mix Type B
Location: Semi mature tree planting
Type: Sand-soil blend 50:50
Supplier: Australian Native Landscape (tel: 131458)

RAISED PLANTER BOX MIXTURE
Shall be homogenous blend of soil and additives in the following proportions:
Type A - Smart Mix No 4
Type D - Smart Mix No 5
Supplier - Benedicts Industries

RAISED PLANTER BOX MIXTURE FOR MATURE TREE PLANTING
Shall be homogenous blend of soil and additives in the following proportions:
Type A - Smart Mix No 4
Type B - Smart Mix No 5
Supplier - Benedicts Industries

3.0 MULCH
APPLICATION: Place mulch to the required depth, (refer to drawings clear of plant stems, and rake to an even surface finishing 25mm below adjoining levels. Ensure mulch is watered in and tamped down during installation.
MULCH TYPE:
Mass Planting beds: Hort Bark (Supplier: A.N.L.)
Communal Gardens: Clean Straw
Reused Planters: Hardwood Chip (Supplier: A.N.L.)
Mulch Type: Shall be COTTAGE MULCH. Available from Solico, Ph (02) 4272 9944

4.0 PLANTS
SUPPLY
The Landscape Contractor is responsible for organising the delivery of plant stock to site and checking plant stock prior to accepting delivery on site to ensure the plants supply possesses the following characteristics:
- Large healthy root systems, with no evidence of root curl, restriction or damage.
- Vigorous, well established, free from disease and pests, of good form consistent with the species or variety.
- Hardened off, not soft or forced, and suitable for planting in the natural climatic conditions prevailing at the site.
- Trees must, unless required to be multi-stemmed, have a single leading shoot.
- Any plants or trees that are accepted by the landscape contractor that do not meet this specification will be replaced at the contractor's expense.
Replacement: damaged or failed plants with plants of the same type and size.

PLANTING
Do not plant in unsuitable weather conditions such as extremes of heat or cold, wind, or rain. Before planting begins, complete cultivation, soil placement, fertilisation etc as previously specified.
Before plants are installed all pot sizes shall have their roots pruned with an appropriate, clean, sharp instrument to eliminate any root confusion occurring at edge of pot zone. Before planting begins, thoroughly water the plants and the planting area. Keep the area and plants moist during planting. Water the plants immediately after planting, and thereafter as required to maintain growth rates free of stress.
The contractor shall give notice, of not less than 24 hours, for inspections as nominated in inspect and hold point schedule

ROOT PRUNING OF TREES
Remove tree from container and root prune 20mm on sides and bottom to ensure all circling roots have been either severed or aligned radially into the surrounding soil. Plant as per detail.

5.0 FERTILISER

MASS PLANTING AREAS
Type: Nutricote Standard Black 270 Day (16:4:4: 8:3)
Installation: Evenly distribute 5g per litre (football size) of fertiliser onto backfill area around rootball prior to placing mulch.

TREE PLANTING
Type: Nutricote Standard Brown 360 Day blend (16: 4:4: 8:3)
Installation: Distribute 2g per litre (football size) of fertiliser into backfill around rootball. Apply in 3 evenly spread layers as hole is filled. First layer is to be half way up the rootball, second layer 1/4 up the rootball and third layer 50-100mm from the soil finished surface level. This application ensures that the nutrients leeches evenly downwards into the soil profile and encourages outward root system growth.

6.0 STAKING AND TYING
Stakes shall be straight plantation grown hardwood, free from knots and twists, pointed at one end and sized according to size of plants to be staked.
a. 5-15 litre size plant 1x(1200x25x25mm)
b. 35-75 litre size plant 2x(1500x38x8mm)
c. 100 greater than 200 litre 1x(1800x40x8mm)
Ties shall be 50mm wide hessian webbing or approved equivalent nailed or stapled to stake. Drive stakes a minimum one third of their length, avoiding damage to the root system, on the windward side of the plant.

7.0 GEOTEXTILE
Type: Polymeric fabric formed from a plastic yarn composed of at least 85% by weight of propylene, ethylene, amide or vinylidenechloride and containing stabilisers or inhibitors to make the filaments resistant to deterioration due to ultraviolet light.
Identification and marking: To AS 3705.
Product: Bidin A34
Recommended Supplier: Geofabrics Australia (Tel: 02 9821 3277).

MAINTENANCE PROGRAM

Maintenance shall mean the care and maintenance of the landscape works by accepted horticultural practice as rectifying any defects that become apparent in the landscape works under normal use. This shall include, but shall not be limited to, watering, mowing, fertilising, reseeding, returfing, weeding, pest and disease control, staking and tying, replanting and plant replacement, cultivation, pruning, aerating, renovating, topdressing, maintaining the site in a neat and tidy condition as follows:

1.0 GENERAL
The Landscape Contractor shall maintain the landscape works for the term of the maintenance (or plant establishment) period to the satisfaction of the Landscape Architect and Client. The Landscape Contractor shall attend to the site on a weekly basis. The maintenance period shall commence at practical completion and continue for a period of twenty six (26) weeks.

2.0 WATERING
Grass and trees shall be watered regularly so as to ensure continuous healthy growth. Street trees and larger plant stock are to be watered through the top of the rootball to ensure a thorough soaking of the plant rootball. Watering of street trees shall be carried out on a weekly basis throughout the maintenance period regardless of rainfall.

3.0 RUBBISH REMOVAL
During the term of the maintenance period the Landscape Contractor shall remove rubbish that may occur and reoccur throughout the maintenance period. This work shall be carried out regularly so that at weekly intervals the area may be observed in a completely clean and tidy condition.

4.0 REPLACEMENTS
The Landscape Contractor shall replace all plants that are missing, unhealthy or dead at the Landscape Contractor's cost. Replacements shall be of the same size, quality and species as the plant that has failed unless otherwise directed by the Landscape Architect. Replacements shall be made on a continuing basis not exceeding two (2) weeks after the plant has died or is seen to be missing. The landscape contractor is to report any evidence of theft or vandalism to the Landscape Architect within one day of them occurring.

5.0 STAKES AND TIES
The Landscape Contractor shall replace or adjust plant stakes and tree guards as necessary or as directed by the Landscape Architect. Remove stakes and ties at the end of the maintenance period if so directed.

6.0 PRUNING
Trees and shrubs shall be pruned as directed by the Landscape Architect. Pruning will be directed at the maintenance of the dense foliage or miscellaneous pruning beneficial to the condition of the plants. Any damaged growth shall be pruned. All pruned material shall be removed from the site.

7.0 MULCHED SURFACES
All mulched surfaces shall be maintained in a clean and tidy condition and be reinstated if necessary to ensure that a depth of 75mm is maintained. Ensure mulch is kept clear of plant stems at all times.

8.0 PEST AND DISEASE CONTROL
The Landscape Contractor shall spray against insect and fungus infestation with all spraying to be in accordance with the manufacturer's directions. Report all instances of pests and diseases (immediately that they are detected) to the Landscape Architect prior to spraying.

9.0 GRASS AND TURF AREAS
The Landscape Contractor shall maintain all grass and turf areas by watering, weeding, reseeding, rolling, mowing, trimming or other operations as necessary. Apply lawn fertiliser as specified in fertilisers at the completion of the first and the last mowing, and at times as necessary to maintain healthy grass cover. Carry out last mowing and fertilisation not less than seven (7) days before the end of the maintenance period. Remove grass clippings from site. Grass and turf areas shall be sprayed with approved selective herbicide against broad leaved weeds as required by the Landscape Architect and in accordance with the manufacturer's directions.
No fertiliser is to be used on turf areas.
Grass and turf areas shall be kept mowed to maintain a healthy and vigorous sward within the 30-75mm range, average 50mm.

10.0 WEED ERADICATION
Eradicate weeds by environmentally acceptable methods using a non-residual glyphosate herbicide (eg: 'Roundup') in any of its registered formulae, at the recommended maximum rate. Regularly remove by hand, weed growth that may occur or recur throughout grassed, planted and mulched areas. Remove weed growth from an area 1000mm diameter around the base of trees in grassed areas. Continue eradication throughout the course of the works and during the maintenance period.

11.0 SOIL SUBSIDENCE
Any soil subsidence or erosion which may occur after the soil filling and preparation operations shall be made good by the Landscape Contractor at no cost to the client.

12.0 COMPLETION
Notwithstanding anything to the contrary in the Contract, The Landscape Architect may instruct the Landscape Contractor to perform urgent maintenance works. Should the Landscape Contractor fail to carry out these works within seven (7) days of such a notice, the Principal reserves the right to employ others to carry out such works and charges costs of these works to the Landscape Contractor.

INDICATIVE PLANT LIST

GROUND FLOOR LANDSCAPE

KEY	SCIENTIFIC NAME	COMMON NAME	NATIVE / EXOTIC	AVERAGE MATURE HEIGHT X SPREAD (m)	POT SIZE
GROUND LEVEL GARDENS					
TREES					
Can	Citrus aurantifolia	Lime Tree	E	3 x 3	200L
CM	Citrus x meyeri	Meyer Lemon	E	6 x 3	200L
Can	Cupanopsis anacardoides	Tuckeroo	N	6 x 4	400L
Ere	Elaeagnus reticulatus	Blueberry Ash	N	8 x 6	400L
MLG	Magnolia 'Little Gem'	Dwarf Magnolia	E	4 x 3	400L
MAS	Magnolia 'St Marys'	St Marys	E	4 x 3	400L
PC	Pyrus calleryana 'Capital'	Ornamental Pear	E	10 x 3	400L
PN	Pyrus salsola	Snow Pear	E	6 x 4	400L
Tia	Tristanopsis laurina	Water Gum	N	6 x 4	400L
WS	Waterhousea floribunda 'Sweeper'	Weeping Lily Pili	N	10 x 5-8	400L

SHRUBS					
ARW	Asplenium 'Red Wing'	Azalea	E	1 x 1	300mm
Ga	Gardenia japonica	Shell Ginger	E	5 x 4	300mm
GF	Gardenia augusta 'Florida'	Gardenia	E	1 x 1	300mm
Mpan	Murraya paniculata	Orange Jasmine	E	3 x 2	300mm
PMH	Pittosporum tobira 'Miss Muffet'	Miss Muffet Pittosporum	E	1 x 1	300mm
SAB	Syzygium 'Aussie Boomer'	Aussie Boomer Lily Pili	N	1.5 x 1.5	300mm
FEATURES					
Aat	Agave attenuata	Agave	E	1 x 1	300mm
AN	Alpinia 'Nutzens'	Dwarf Cardamom	E	1 x 1	300mm
Aze	Alpinia zerumbet	Shell Ginger	E	1 x 1	300mm
Asu	Asplenium australasicum	Birds Nest Fern	N	1 x 1	300mm
Beu	Begonia nudum	Fishbone Water Fern	N	1 x 1	300mm
Cru	Calathea rufibarba	Furry Feather Calathea	E	0.5 x 0.5	300mm
CR	Cordyline frutescens 'Rubra'	Cordyline	E	2 x 2	300mm
CGS	Ctenanthe 'Grey Star'	Ctenanthe 'Grey Star'	E	1-1.5 x 1-1.5	300mm
Dex	Doranthus excelsa	Gymea Lily	N	1 x 1	300mm
Mco	Macrorhiza communis	Burrowing	N	1.5 x 1.5	300mm
Snl	Strelitzia reginae	Giant Bird of Paradise	E	12 x 4	25L
Sre	Strelitzia reginae	Bird of Paradise	E	1.5 x 1.5	300mm

STRAPPY PLANTS					
AcI	Artocarpus cirratum	Renga Renga Lily	E	1 x 1	150mm
Cml	Clivia miniata	Clivia	E	1 x 1	150mm
Cse	Croton pedunculatum	Swamp Lily	N	1 x 1	150mm
DJL	Dianella caerulea 'Little Jewel'	Paroo Lily	N	0.5 x 1	150mm
DSS	Dianella 'Silver Streak'	Paroo Lily	N	0.5 x 1	150mm
Happ	Hemerocallis spp	Day Lily	E	1 x 1	150mm
HB	Hymenocallis littoralis	Spider Lily	E	0.75 x 1	150mm
LJR	Liriope muscari 'Just Right'	Giant Liriope	E	0.5 x 0.5	150mm
LT	Lomandra longifolia 'Tanika'	Spiny Headed Mat Rush	N	0.5 x 1	150mm

GROUNDCOVERS AND CLIMBERS					
AAB	Alysicarpus 'Aussie Bugle'	Australian Bugle	N	0.15 x 1	150mm
AA	Alysicarpus 'Antipurplea'	Bugle	E	0.15 x 1	150mm
Ade	Alternanthera dentata	Ruby Leaf Alternanthera	E	0.5 x 1	150mm
Ael	Aspidistra elatior	Cast Iron Plant	E	0.6 x 0.5	150mm
ABH	Austrocyrtis 'Shocking Beauty'	Austrocyrtis	E	1.5 x 1	150mm
Bca	Blechnum carolinianum	Grass Fern	N	0.3 x 0.5	150mm
Bu	Buxus sempervirens	box	E	0.6 x 0.5	150mm
Can	Cissus antarctica	Kangaroo Vine	N	climber	150mm
Dre	Dichondra repens	Kidney Weed	N	1 x 1	150mm
Fpu	Ficus pumila	Creeping Fig	E	climber	150mm
GR	Gardenia 'Radicans'	Dwarf Gardenia	E	0.3 x 0.4	150mm
Goy	Goodenia ovata	Nap Goodenia	N	1 x 1	150mm
GPRM	Grevillea parrivida 'Royal Mantle'	Prostrate Grevillea	N	0.35 x 5	150mm
Hvl	Hardenbergia violacea	Happy Wanderer	N	climber	150mm
Hsc	Hibbertia scandens	Snake Vine	N	climber	150mm
Jca	Juniperus conferta	Shore Juniper	E	0.4 x 2	150mm
Kru	Kennedia rubicunda	Dusky Coral Pea	N	climber	150mm
Oja	Ophiopogon japonicus	Mundo Grass	E	0.15 x 0.15	150mm
Ppa	Paspalum panderana	Wonga Wonga Vine	N	climber	150mm
PK	Philodendron 'Xanadu'	Xanadu	E	1 x 1	150mm
Sae	Scaevola aemula	Fairy Fan Flower	N	0.5 x 0.5	150mm
Tje	Trachelospermum jasminoides	Jasmine	E	climber	150mm
Vhe	Violet hederacea	Violet	N	0.15 x 1	150mm

LEVEL 3 COURTYARD LANDSCAPE

KEY	SCIENTIFIC NAME	COMMON NAME	NATIVE / EXOTIC	MATURE HEIGHT X SPREAD (m)	POT SIZE
TREES					
Can	Cupanopsis anacardoides	Tuckeroo	N	6x4	400L
Oeu	Olea europaea	Olive	E	6x4	200L
Pab	Plumeria obtusa	Frangipani	E	6x4	200L
SHRUBS					
Lst	Lavandula stoechas	French Lavender	E	1x1	300mm
Rof	Rosmarinus officinalis	Rosemary	E	1x1	300mm
Sle	Salvia leucantha	Mexican Sage Bush	E	1x1	300mm
Wjt	Westringia fruticosa	Coastal Rosemary	N	1.5x1.5	300mm
FEATURES					
Aat	Agave attenuata	Agave	E	1x1	300mm
Bvu	Beschermetia yuccoides	Mexican Lily	E	1x1	300mm
Pte	Phormium tenax	NZ Flax	E	1.5x1	300mm

GROUNDCOVERS & CLIMBERS					
Aco	Aptenia cordifolia	Baby Sun Rose	E	0.15 x 1	150mm
BBC	Banksia 'Whitday Candies'	Dwarf Banksia	E	0.15 x 1	150mm
Bnu	Bradycome multifida	Cut Leaf Daisy	N	0.15 x 1	150mm
Cgl	Carpobrotus glaucescens	Pig Face	N	0.15 x 1	150mm
Cap	Chrysocarpum apiculatum	Yellow Buttons	N	0.15 x 1	150mm
Can	Canavallus canerum	Silverbush	E	0.6 x 1	150mm
Ccl	Convolvulus elatum	White Paper Daisy	E	1 x 0.3	150mm
Copk	Cotyledon spp	Cotyledon	E	0.15 x 1	150mm
Cte	Crassula tetragona	Crassula	E	0.15 x 1	150mm
EVQ	Echeveria 'Violet Queen'	Echeveria	E	0.15 x 0.15	150mm
Gto	Galearia tomentosa	Galearia	E	0.5 x 1	150mm
KPP	Kalanchoe tomentosa 'Panda Plant'	Kalanchoe	E	0.3 x 1	150mm
LPB	Linum percat 'Perceci Blue'	Blue Statice	E	0.3 x 0.5	150mm
MDM	Mesembryanthemum 'Dwarf Mauve'	Mesembryanthemum	E	0.3 x 1	150mm
Mpp	Mesembryanthemum spp	Mesembryanthemum	E	0.3 x 1	150mm
Mpa	Myoporum parvifolium	Creeping Boobialla	N	0.3 x 1	150mm
Sgl	Senecio glaucescens	Senecio	E	0.3 x 1	150mm
Sse	Senecio serpens	Senecio	E	0.3 x 1	150mm

Project: 17-093W, St Basil's Homes, Bexley
Client: St Basil's Homes
Date: 20.11.2018
Revision: E
Drawn: MA
Checked: MA

TaylorBrammer
TAYLOR BRAMMER LANDSCAPE ARCHITECTS PTY LTD
SOUTH COAST OFFICE
26 Moore Street, NSW, 2515 E southcoast@taylorbrammer.com.au
Copyright © Taylor Brammer Landscape Architects Pty Ltd.

L00

Landscape: Cover Sheet



LEGEND

	SITE BOUNDARY		WATER PLAY FEATURE		STONE CRAZY PAVING
	FINISHED FLOOR LEVEL		WALL MOUNTED WATER FEATURE		PROPOSED SCREEN TREE
	PROPOSED SPOT LEVEL		SHED		PROPOSED FRUIT TREE
	TOP OF WALL LEVEL		WORK BENCH		PROPOSED OLIVE TREE
	ACCESSIBLE RAMP TO AS1428.1		BRIDGE		PROPOSED FEATURE TREE
	RAISED PLANTER ON RC SLAB		BOLLARD		RAISED VEG GARDEN AS SPECIFIED
	STEEL EDGE		SWALE		RAISED GARDEN
	GRAVEL		CONCRETE FOOTPATH		SENSORY GARDEN
	BENCH SEAT		STONE PAVING ON PEDESTAL		MASS PLANTING
	SCREEN		STONE PAVING		TURF
	1:8 SOLID FENCE		STONE PAVING TO ENTRANCE		ARTIFICIAL TURF
	1:8 OPEN PALISADE FENCE		TERRACOTTA TILE COURTYARD PAVING		ARBOR
	1:2 OPEN PALISADE FENCE				

DIALOGUE

- 1 The open aspect from within the foyer for looks out onto an entrance plaza that promotes a hype of activity. The entrance plaza consists of a café spill out space and promotes social interaction and defines the entrance to the high street.

2 The Orchard Garden is aligned around the multiuse area in raised feature planters, creating enclosure and privacy. The warm sunny climate will enable the establishment of lemon, apple, orange and peach trees with ornamental Mediterranean plant species beneath. The walls of the raised planters will incorporate seating, startigially located to relate to communal activities.

3 The main pedestrian entrance into the communal multiuse courtyard is treated with timber arbour structure, which provides a setting for a flexible outdoor eating area.

4 The arbor will continue the length of the courtyard which utilises oversized large timbers, and will be spaced to suit and enhance the geometric form of the Greek theme garden.

5 The multi-use courtyard consists of an enclosed artificial lawn area that can be used for a variety of functions by all age ranges including:
Performance/ entertainment
Places to rest and relax
Communal group activities
Bocce play
Social events
Putting green
Picnic area and BBQs
Yoga / Exercise

6 A separate artificial grass area has been provided for child play to provide a run-around area for visiting children. The space also caters for the provision of a play water feature which acts as an interactive sculpture and as a focal art feature.

7 The high street is a paved walkway that allows the user to access the shops and amenities from the courtyard.

8 The sensory garden is a space for escapism, seclusion and relaxation for day care residents and family. The space is divided geometrically creating separate garden rooms with a Mediterranean/Greek theme concept themes are based upon the 5 senses.

9 The dementia gardens are treated with a variety of Mediterranean/Greek shrub and tree species to provide sensual stimulation for residents through plant form, colour and texture. Seating areas are proposed along the edge of the footpath and amongst planted areas creating areas of privacy and relaxation.

10 Covered spill out area provides dementia residents with a space for social and community interaction

11 The entrance into the main foyer is treated with a stone paved shared surface paving incorporating pedestrian footway and vehicular drop off. The paving is orientated to suit the alignment of the building façade and entrance carriageway.

12 Small trees planted in a grid are proposed along Goyen Avenue to provide current residents with a decorative screen treatment.

13 Screen / buffer planting with mature trees and shrubs to provide protection from southerly winds and to prevent 'overlooking' from Harrow Road.

14 Screen / buffer planting with mature trees and shrubs are provided to promote 'privacy screening' for residents along eastern boundary overlooking from Bowlers Avenue.

15 Screen planting along the northern boundary provides a wind barrier and protection for the ground floor plaza and visual screen for existing residents.
- The below list of tree species mix are to be planted in this area.

Botanical Name	Common Name	Mature Height	Canopy Spread
Cupaniopsis anacardioides	Tuckeroo	12m	3m
Elaeocarpus reticulatus	Blueberry Ash	10m	5m
Tristaniopsis laurina	Water Gum	10m	8m
Waterhousea floribunda	Weeping Lily pilli	15m	7m
- 9 The communal food garden & chicken coop area provides 'activity' for residential food production.



CHICKEN COOP



STONE RANDOM PAVING



SENSORY PLANTING



BOCCE COURT



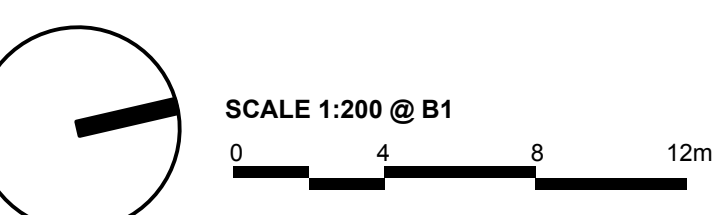
COMMUNAL OUTDOOR EATING



PERGOLA



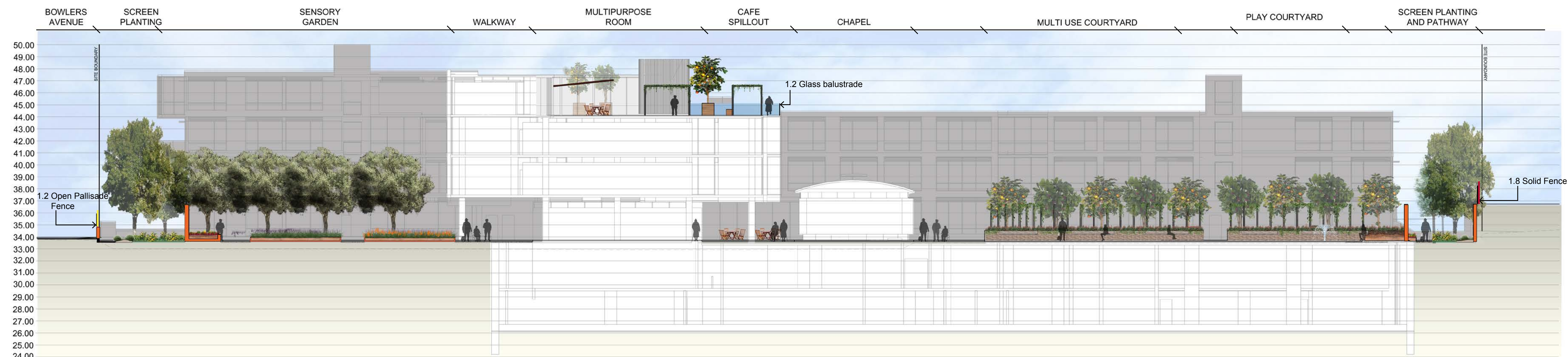
FRUIT TREES



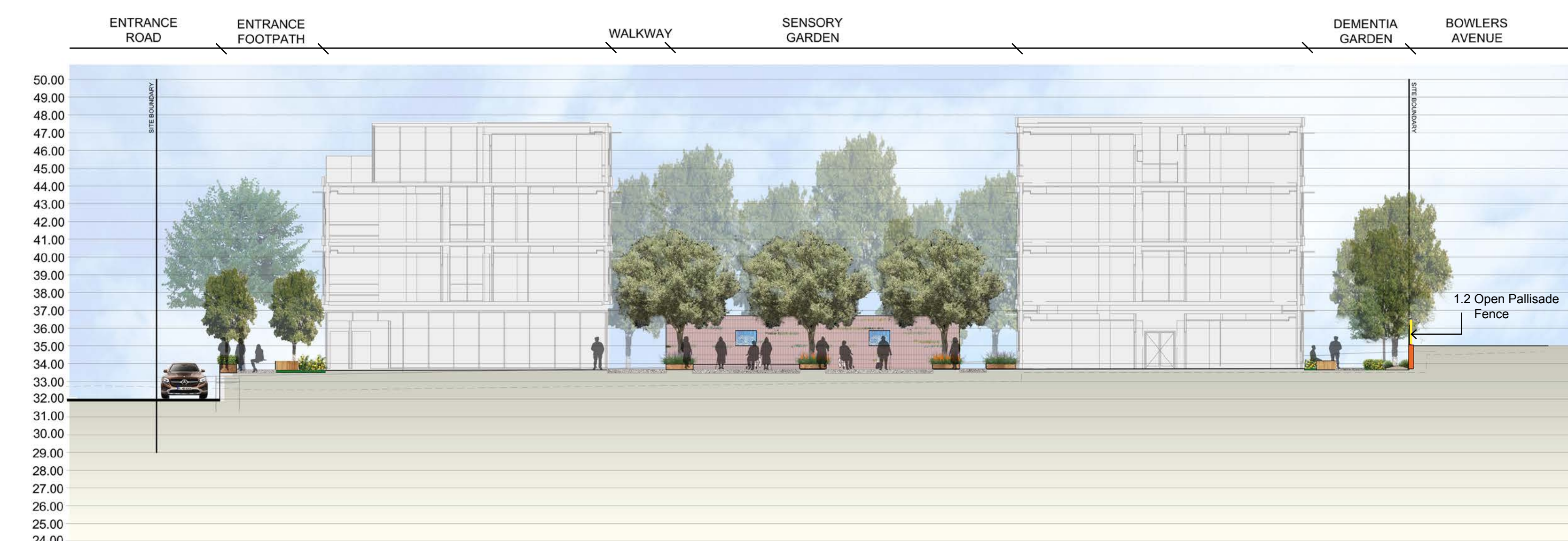
Landscape: Ground Level Master Plan

Project: 17-093W, St Basil's Homes, Bexley
Client: St Basil's Homes
Date: 20.11.2018
Revision: E
Drawn: MA
Checked: MA

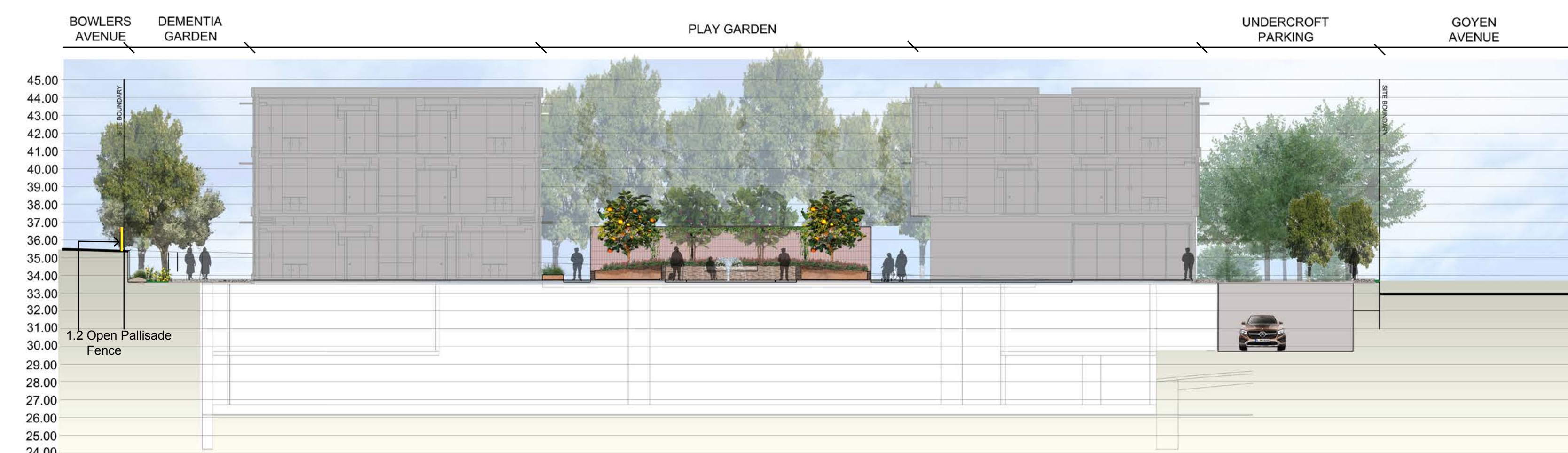
TaylorBrammer
TAYLOR BRAMMER LANDSCAPE ARCHITECTS PTY LTD
SOUTH COAST OFFICE
26 Moore Street, NSW, 2515 E southcoast@taylorbrammer.com.au
Copyright © Taylor Brammer Landscape Architects Pty Ltd.



SECTION ELEVATION AA
1:200



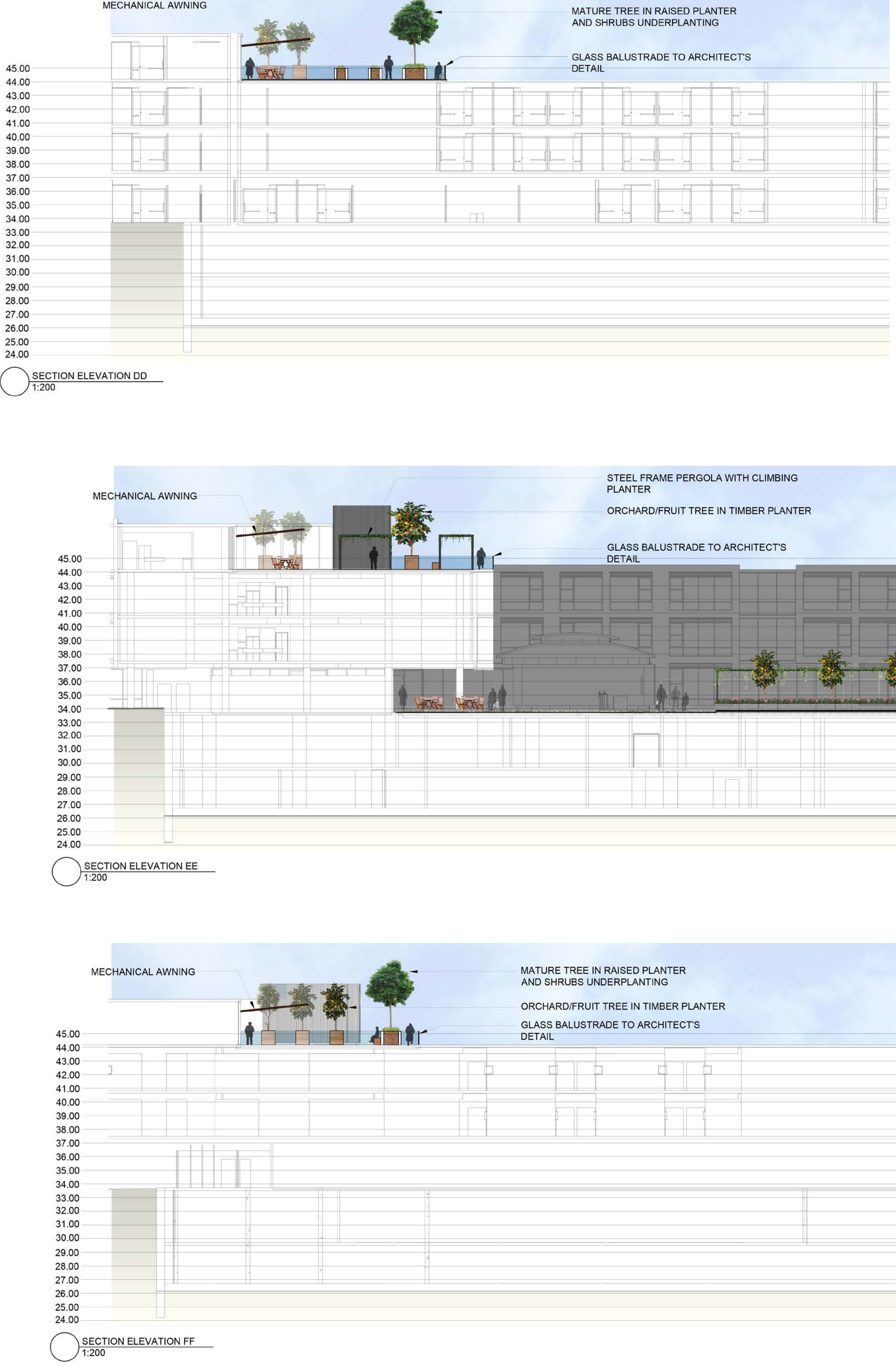
SECTION ELEVATION BB
1:200



SECTION ELEVATION CC
1:200



KEY PLAN



LEGEND

	SITE BOUNDARY
	FINISHED FLOOR LEVEL
	PROPOSED SPOT LEVEL
	LOCATION OF PROPOSED MATURE TREE IN PLANTING
	FRUIT TREE IN LARGE POT
	ORCHARD TREE IN RAISED PLANTER
	SHED
	MECHANICAL AWNING
	RAISED PLANTER ON RC SLAB
	SEATING WALL
	LIGHTWEIGHT STEEL FRAME PERGOLA WITH CLIMBER
	RAISED VEGETABLE GARDEN
	FURNITURE
	GLASS BALUSTRADE
	MASS PLANTING ON SLAB
	ARTIFICIAL TURF
	STONE PAVING ON PEDESTAL

DIALOGUE

- Spillout and entrance spaces are treated with stone formal paving surface treatment. These spaces will be utilised as communal areas for our community interaction and will be covered at times of high heat with mechanical awnings.
- Raised planters with are treated with species that will provide all year round colour and interest a, as well as being able to maintain healthy growth in a high level heat environment.
- Specimen fruit trees in large timer planters and pots are provided in modular units that can be moved to make a flexible space.
- Artificial turf areas are proposed as an alternate treatment to breakup the paved surface.
- A feature pergola with climbing plants is located within the central courtyard to provide an alternate covered seating area. This is an essential feature of the courtyard during summer periods of high heat.
- Raised community vegetable garden area provides 'activity' for residential food production.



ARTIFICIAL TURF



FRUIT TREE INPOT



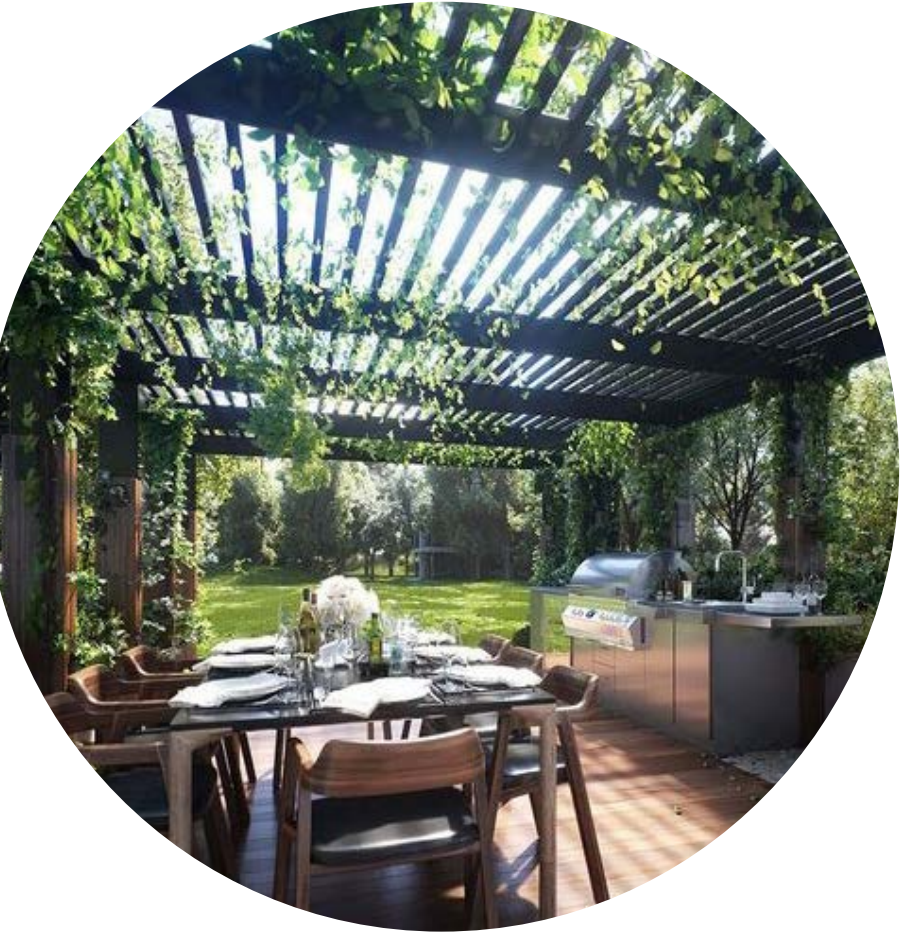
ORCHARD TREE PLANTER



MECHANICAL AWNING



RAISED PLANTERS & SEATING



PERGOLA

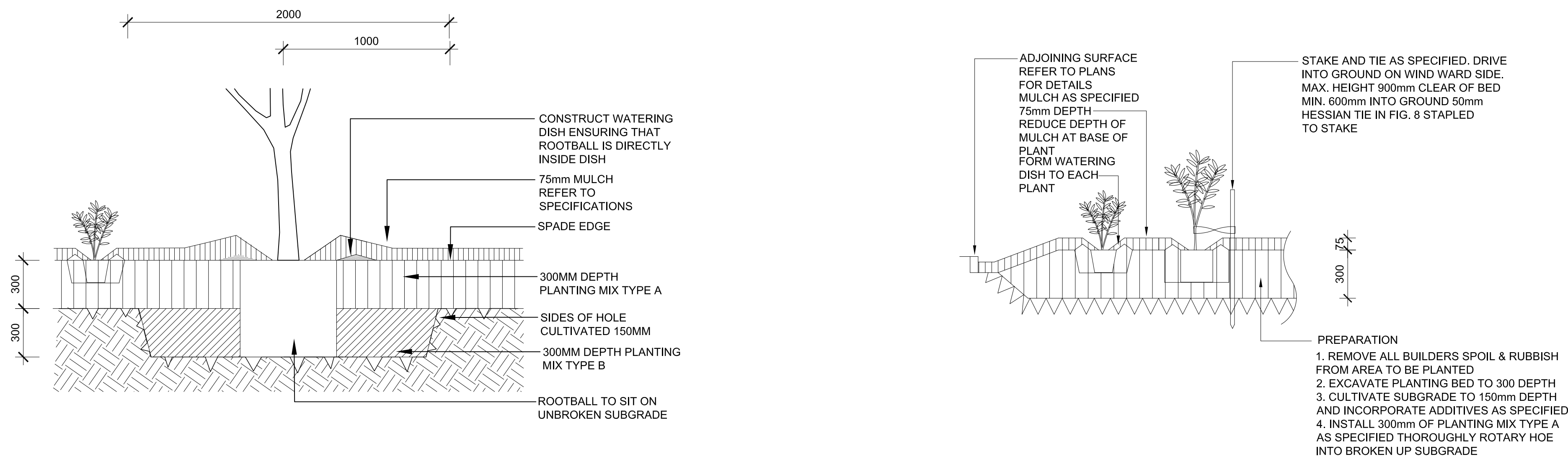
Landscape: Level 3 Master Plan & Section Elevations

Project: 17-093W, St Basil's Homes, Bexley
Client: St Basil's Homes
Date: 20.11.2018
Revision: E
Drawn: MA
Checked: MA

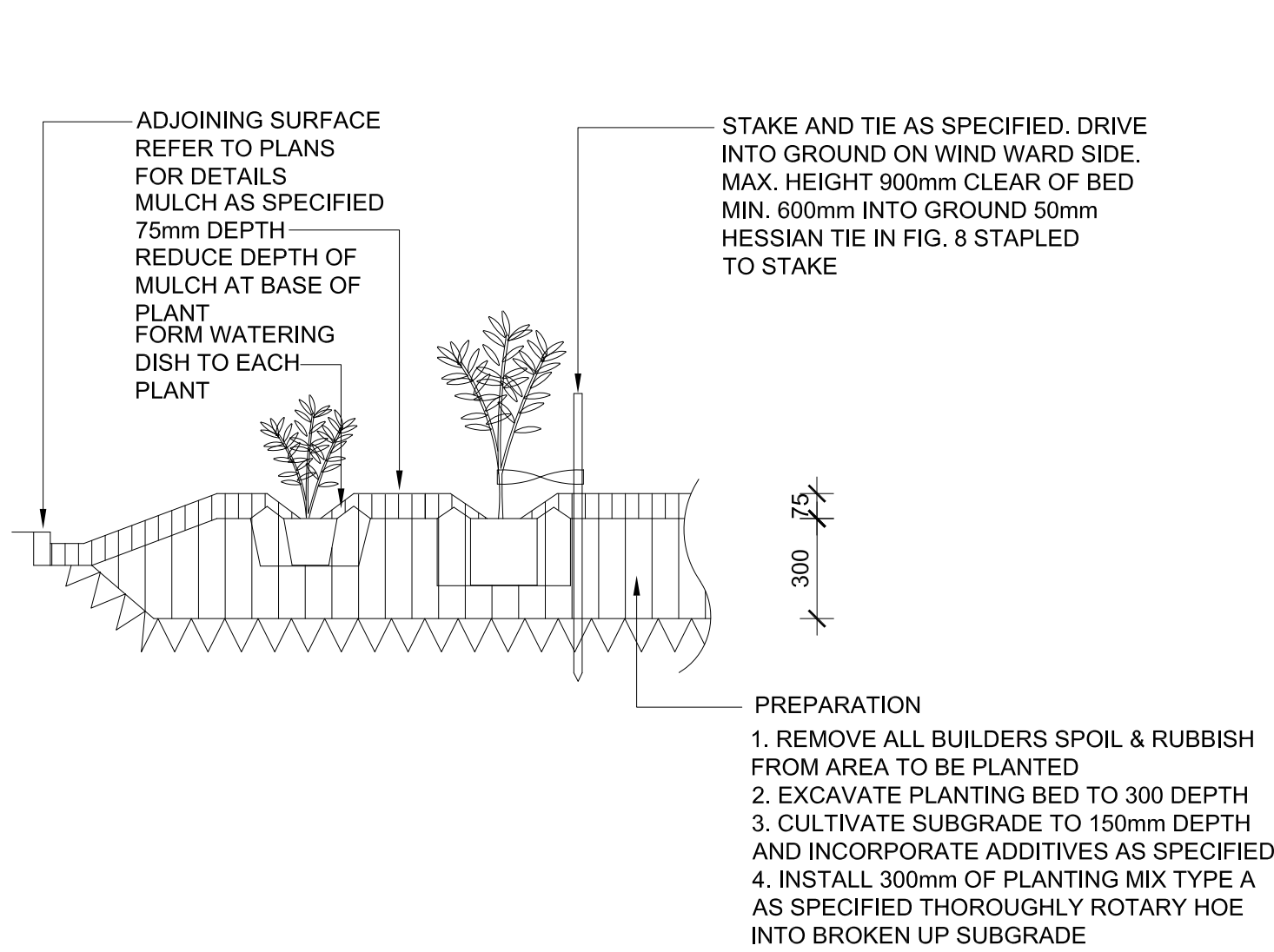
TaylorBrammer
TAYLOR BRAMMER LANDSCAPE ARCHITECTS PTY LTD
SOUTH COAST OFFICE
26 Moore Street, NSW, 2515 E southcoast@taylorbrammer.com.au
Copyright © Taylor Brammer Landscape Architects Pty Ltd.

T 61 2 4287 5088
A00101 1006 124 988

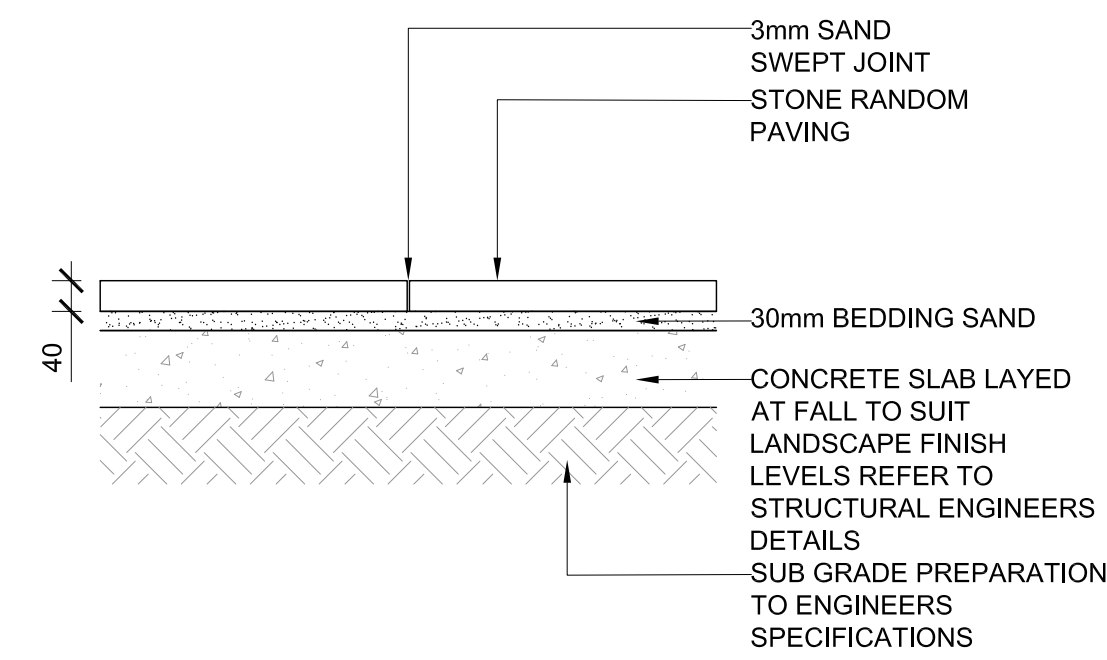
L03



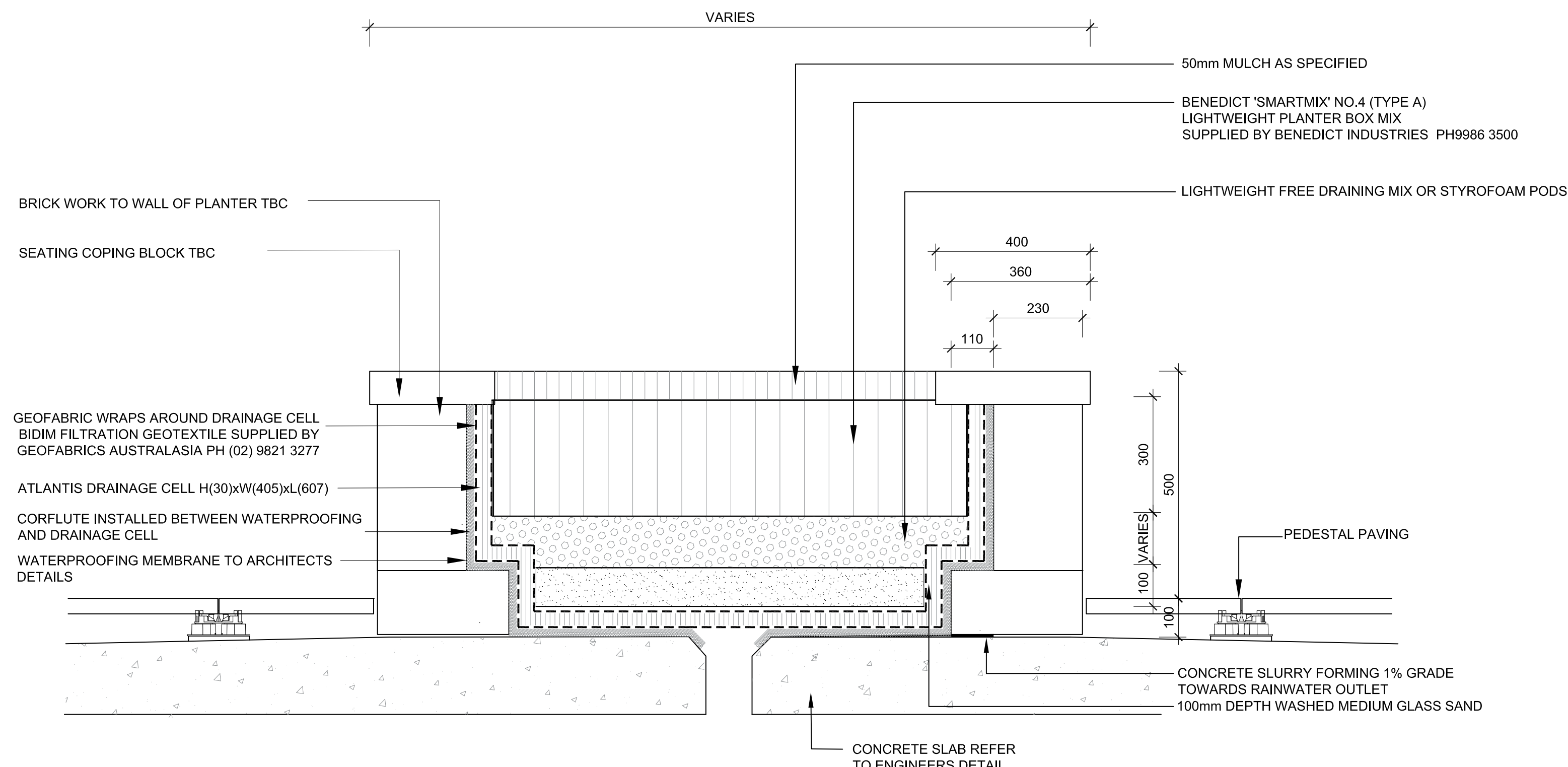
1 MATURE TREE PLANTING IN MASS PLANTING ON NATURAL GROUND
TYPICAL SECTION 1:20



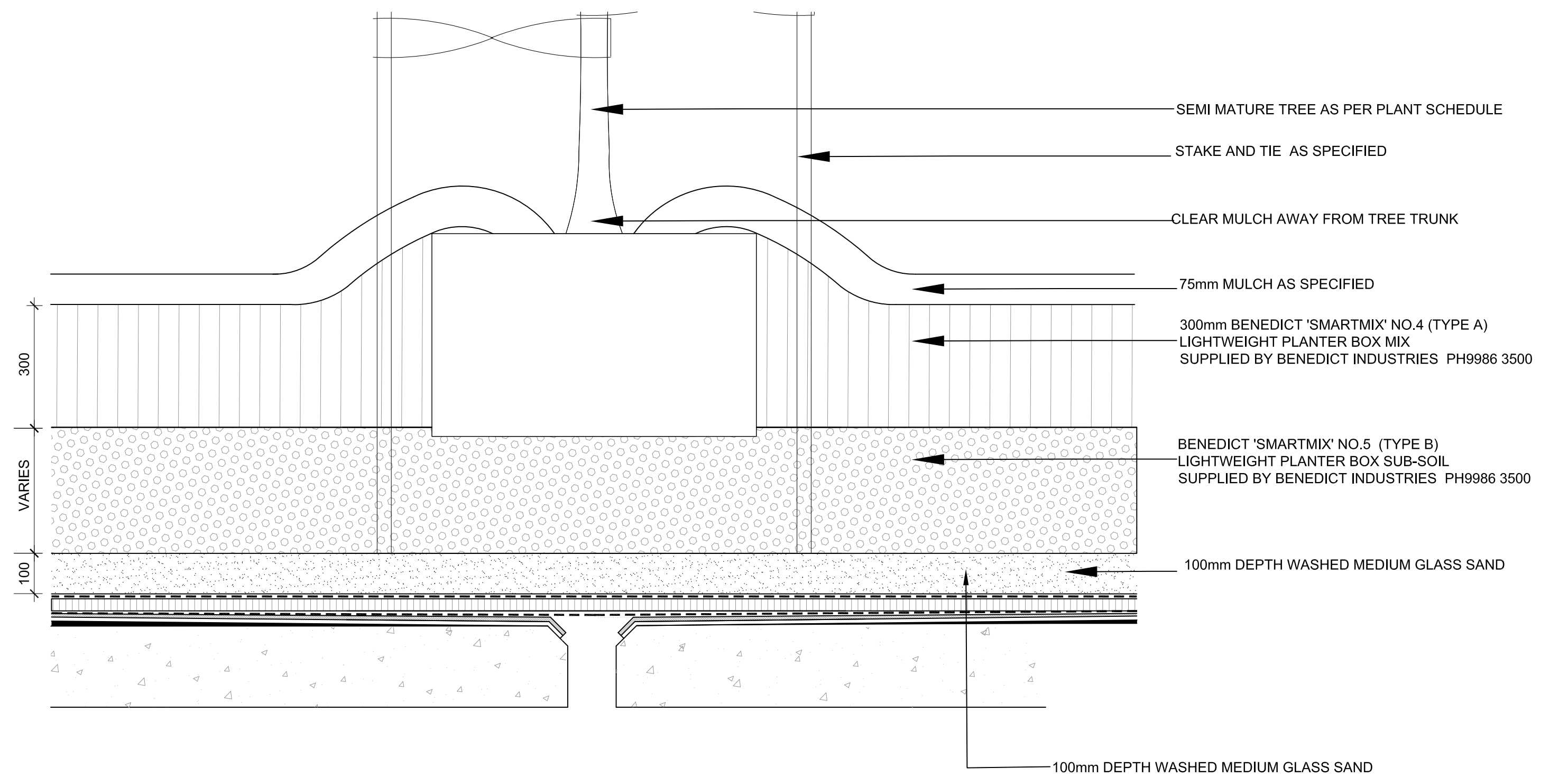
4 MASS PLANTING BED ON NATURAL GROUND
TYPICAL SECTION 1:20



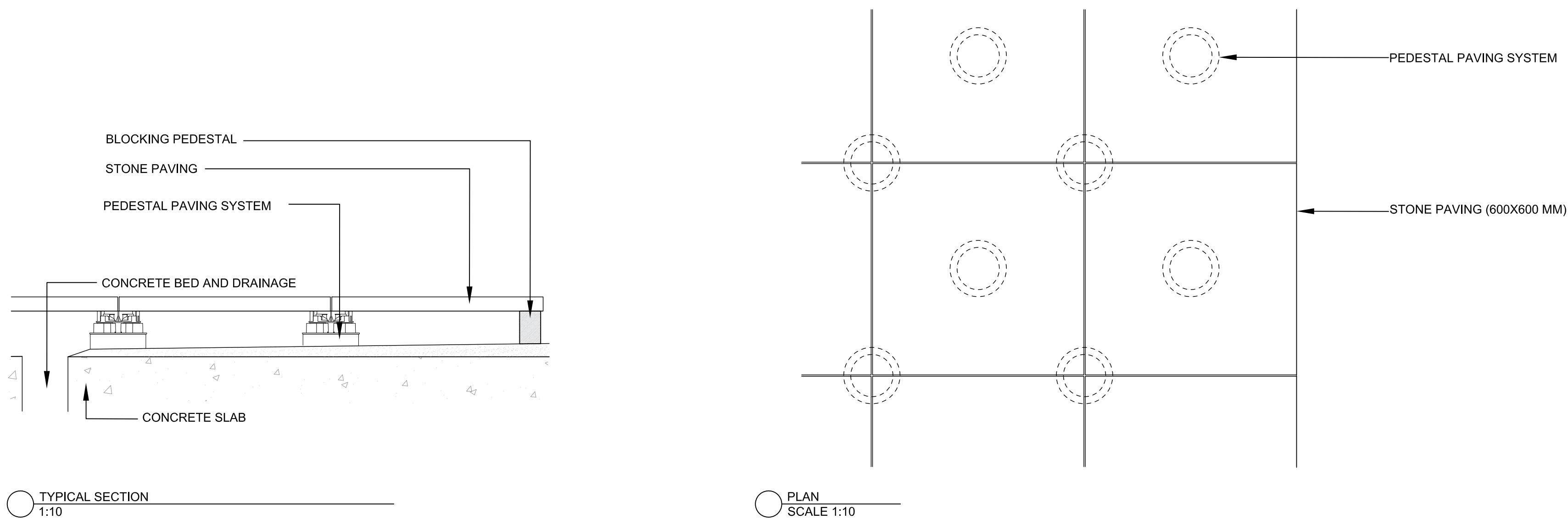
5 STONE PAVING ON GROUND
TYPICAL SECTION 1:10



2 RAISED PLANTER
TYPICAL SECTION 1:10



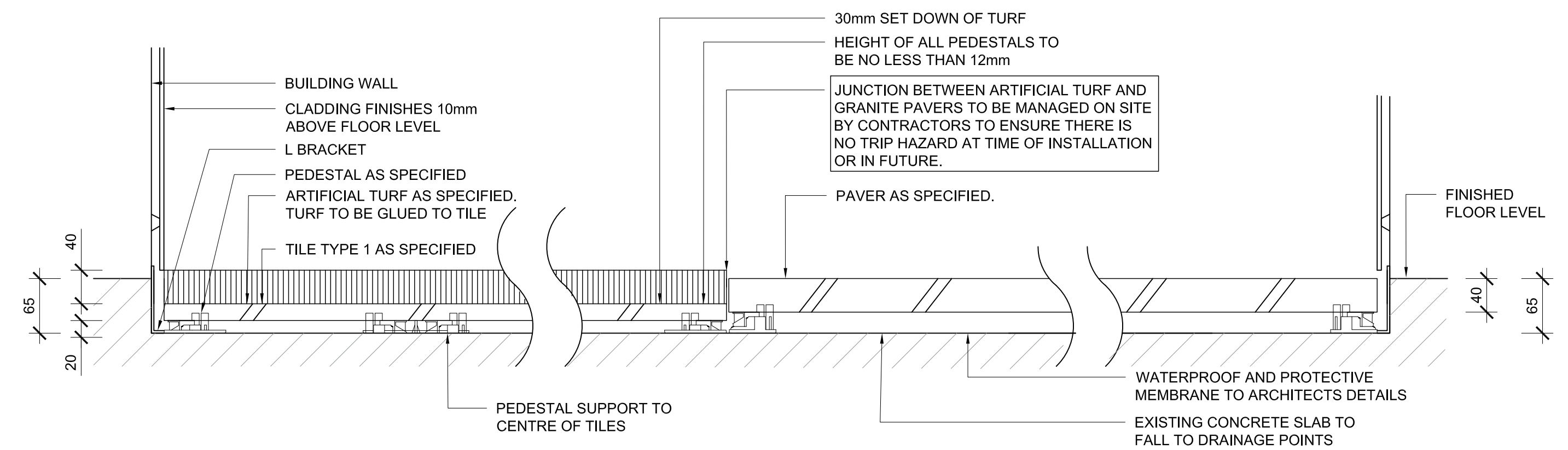
6 MATURE TREE PLANTING IN RAISED PLANTER
TYPICAL SECTION 1:10



TYPICAL SECTION
1:10

PLAN
SCALE 1:10

3 PAVING ON PEDESTAL



7 PEDESTAL PAVING AND SYNTHETIC TURF DETAIL
TYPICAL SECTION 1:5